

# SC103

## RFID Standalone Access Control Terminal



SC103 is an access control device produced by ZKTeco, which is made with elegant design and professional surface treatment. The device has lock control, alarm, exit, button and door sensor. The wiegand-in interface is used to connect external reader to construct master and slave system. Also, the device can be used to connect with a control panel as a

reader by wiegand-out interface. The operation can be done on the device through LCD display, also can be done on PC software and uploaded to the device through TCP/IP, RS232/RS485 communication. The USB-host is used for uploading and downloading data, including user template and records etc. SC103 is suitable for house, small office and factory etc.

---

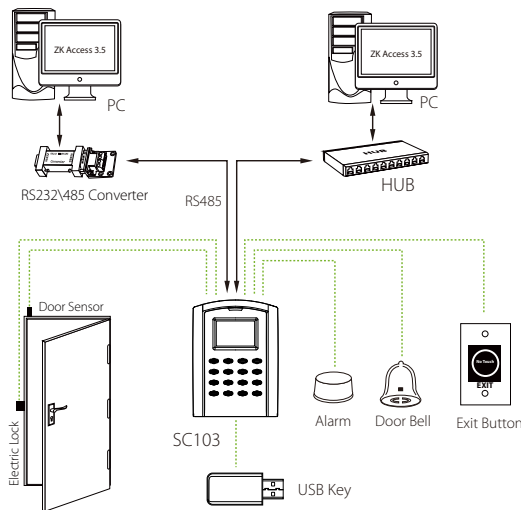
### Feature

- Tough casing design
- Easy installation, safe and reliable
- Simple and convenient operation method
- ID card standard, Mifare card optional
- Full door lock control system
- Wiegand input and output
- Prompt audio and LED feedback, to guide the user to operate

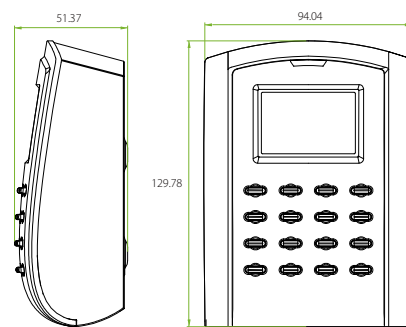
# Specifications

ID card Capacity	30,000
Transaction Capacity	50,000
Communication	TCP/IP, RS232/485, USB-Host
Access Control Interface for	3 <sup>rd</sup> party electric lock, door sensor, exit button, alarm, doorbell
Wiegand Signal	Output & Input
Standard Functions	Anti-passback
Optional Functions	Mifare, HID Prox
Display	LCD
Power Supply	DC 12V
Operating Temperature	0°C ~ 45°C
Operating Humidity	20% ~ 80%
Dimension(L×W×H)	129.5mm×95mm×48.5mm
Gross Weight	0.7Kg

# Configuration



# Dimensions (mm)



ZKTeco Middle East  
 E-mail: sales@zkteco.com  
 www.zkteco.com